

| OKLAHOMA DEPARTMENT OF TRANSPORTATION | | | | |
|---------------------------------------|-------|---------------|-------------|--------------|
| FED. ROAD DIST. NO. | STATE | JOB PIECE NO. | FISCAL YEAR | TOTAL SHEETS |
| 6 | OKLA. | | | |
| DESCRIPTION | | REVISIONS | DATE | |
| | | | | |

SECTION CORNER B-7-28 FOUND PK NAIL PER REFERENCES ON CCR FILED BY ROBBY L. JOHNSON, PLS 1539, DATED MARCH 30, 2007, AND ON CCR FILED BY DAVID PAGE, PLS 1324, DATED SEPTEMBER 5, 2000. POSITION AGREES WITH O.H.D. STANDARD BRASS MONUMENT ESTABLISHED UNDER SWO2834(1) BY RAY N. SEELEY, ODOT LOCATION ENGINEER, SHOWN ON FORM SD-11 DATED SEPTEMBER 20, 1968. ACCEPTED POSITION OF PK NAIL AS FOUND. REPLACED WITH MAG NAIL WITH WASHER MARKED ODOT PLS 1561.

1/4 CORNER B-7-640 FOUND 1/2" IRON PIN WITH CAP MARKED RPLS 201 PER REFERENCES ON CCR FILED BY ROBBY L. JOHNSON, DATED MARCH 26, 2007 AND ON CCR FILED BY DAVID PAGE, JR., DATED OCTOBER 14, 2004. POSITION OF MONUMENT IS IN ACCORDANCE WITH OTHER LAND CORNERS AND LOCAL EVIDENCE. ACCEPTED POSITION OF MONUMENT AS FOUND.

SECTION CORNER B-7-641 FOUND 1/2" IRON PIN AS DESCRIBED ON CCR FILED BY MARILYN BROOKS, PLS 1467, DATED JANUARY 25, 2007. POSITION OF MONUMENT IS IN ACCORDANCE WITH OTHER LAND CORNERS IN THE AREA, AND WITH LOCAL EVIDENCE. ACCEPTED POSITION OF MONUMENT AS FOUND. PLACED PLASTIC CAP MARKED ODOT PLS 1561 ON FOUND IRON PIN AS ENDORSEMENT.

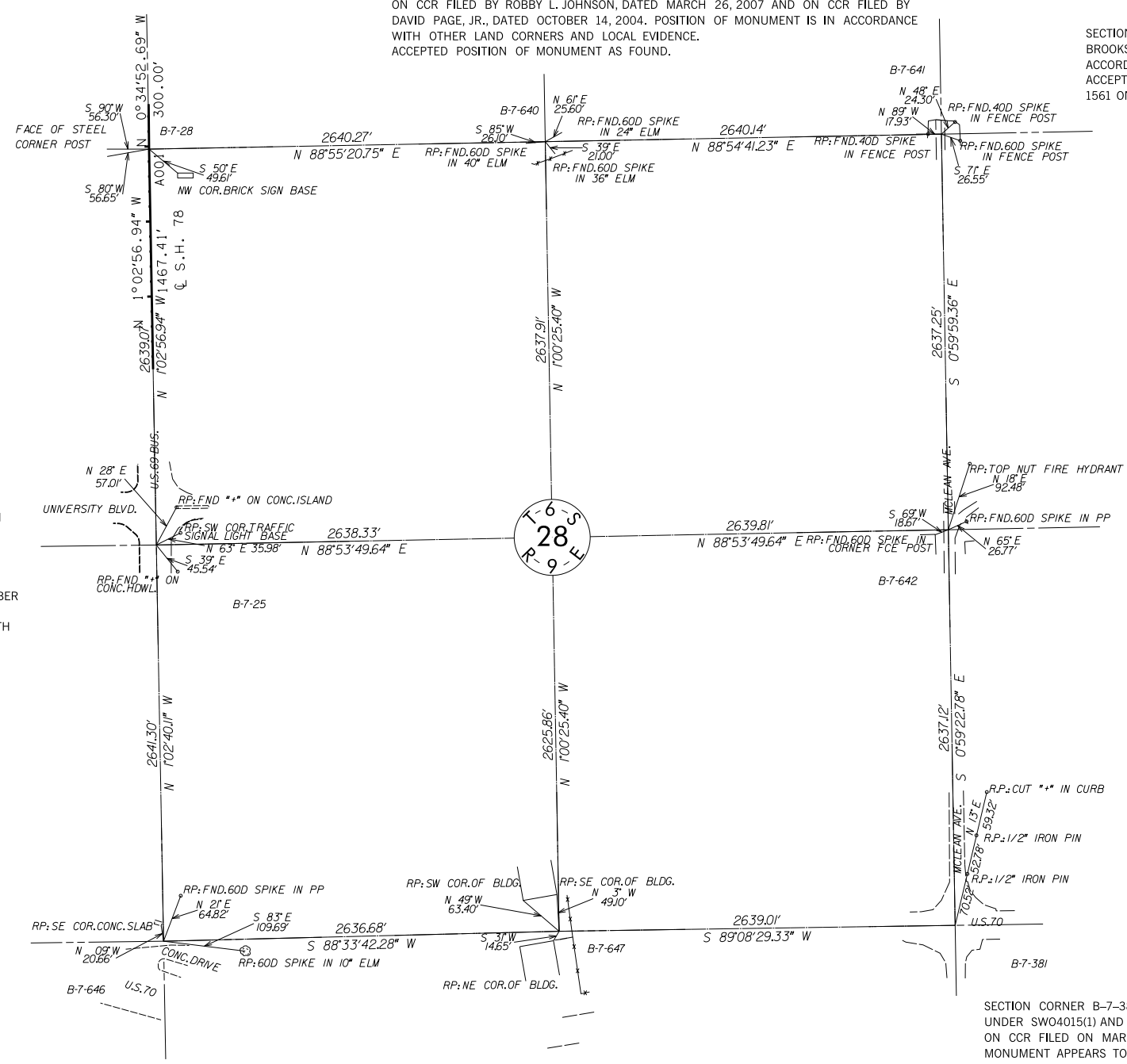
1/4 CORNER B-7-25 FOUND PK NAIL PER REFERENCES ON CCR FILED BY ROBBY L. JOHNSON, PLS 1539, DATED MARCH 30, 2007, AND PREVIOUS CCR FILED BY DAVID PAGE, PLS 1324, DATED SEPTEMBER 5, 2000. POSITION AGREES WITH O.H.D. STANDARD BRASS MONUMENT SET BY RAY N. SEELEY, ODOT LOCATION ENGINEER, ESTABLISHED UNDER SWO2834(1) AND SHOWN ON FORM SD-11, DATED SEPTEMBER 20, 1968. ACCEPTED POSITION OF PK NAIL AS FOUND. REPLACED WITH MAG NAIL WITH WASHER MARKED ODOT PLS 1561.

1/4 CORNER B-7-642 FOUND ALUMINUM CAP AS SHOWN ON CCR FILED ON MARCH 26, 2007 BY ROBBY L. JOHNSON, PLS 1539, AND ON CCR FILED ON AUG 1, 2000, BY DAVID L. PAGE. POSITION OF ALUMINUM CAP IS IN ACCORDANCE WITH OTHER LAND CORNERS AND WITH LOCAL EVIDENCE. MONUMENT ACCEPTED AND USED AS FOUND.

SECTION CORNER B-7-646 FOUND 3/8" IRON PIN SHOWN ON CCR AS SET BY DAVID PAGE, JR., PLS 1324, AND FILED ON JANUARY 19, 2005. PIN WAS SUBSEQUENTLY RECOVERED AND REFERENCED AS SHOWN ON CCRS FILED BY ROBBY L. JOHNSON, PLS 1539, ON MARCH 30, 2007, AND BY RANDY L. MARQUARDT, PLS 1432, ON JUNE 2, 2009. POSITION OF IRON PIN IS IN ACCORDANCE WITH SURROUNDING MONUMENTS AND WITH LOCAL EVIDENCE. ACCEPTED LOCATION OF IRON PIN AS FOUND, AND SET 60D SPIKE WITH WASHER MARKED ODOT PLS 1561 AS ENDORSEMENT.

1/4 CORNER B-7-647 FOUND 3/8" IRON PIN PER REFERENCES ON CCR FILED BY ROBBY L. JOHNSON, PLS 1539, DATED MARCH 26, 2007. POSITION OF IRON PIN APPEARS TO AGREE WITH POSITION AS SHOWN ON CCR FILED BY J. STANLEY COALTER, PLS 194, DATED AUGUST 29, 1979. CCR FILED BY DAVID PAGE, JR. DATED OCTOBER 14, 2004 SHOWS A 1/2" IRON PIN SET THAT DOES NOT APPEAR TO AGREE WITH POSITION OF 3/8" IRON PIN. 1/2" IRON PIN NOT FOUND. ACCEPTED POSITION OF 3/8" IRON PIN AS FOUND. SET 1/2" IRON PIN WITH CAP MARKED ODOT PLS 1561 ADJACENT TO 3/8" IRON PIN AS ENDORSEMENT.

SECTION CORNER B-7-381 FOUND PK NAIL WITH TAG MARKED ODOT PLS 1198, ESTABLISHED UNDER SWO4015(1) AND FILED BY RICKY E. STEELE, PLS 1198. MONUMENT ALSO SHOWN ON CCR FILED ON MARCH 30, 2007 BY ROBBY L. JOHNSON, PLS 1539. POSITION OF MONUMENT APPEARS TO CONFORM TO POSITION OF 3/4" IRON ROD FOUND AND FILED BY FORREST M. KEENE, JR. ON CCR DATED FEBRUARY 27, 1985. ACCEPTED POSITION OF MONUMENT AS FOUND.



| | | | | |
|----------|--|--|--|---|
| PLS | | | | OKLAHOMA DEPARTMENT OF TRANSPORTATION SURVEY DIVISION SURVEY DATA SHEET SWO 4811 (1) PROJECT NO. 27912(04) SHEET NO. 5007 |
| DRAWN | | | | |
| CHECKED | | | | |
| APPROVED | | | | |
| CREW | | | | |